

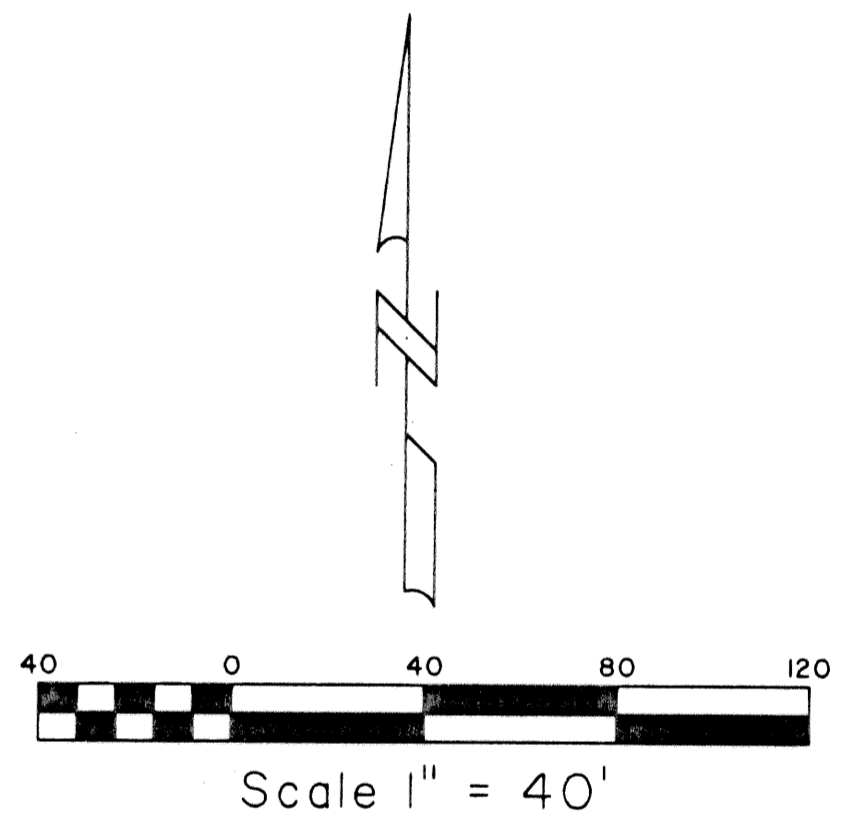
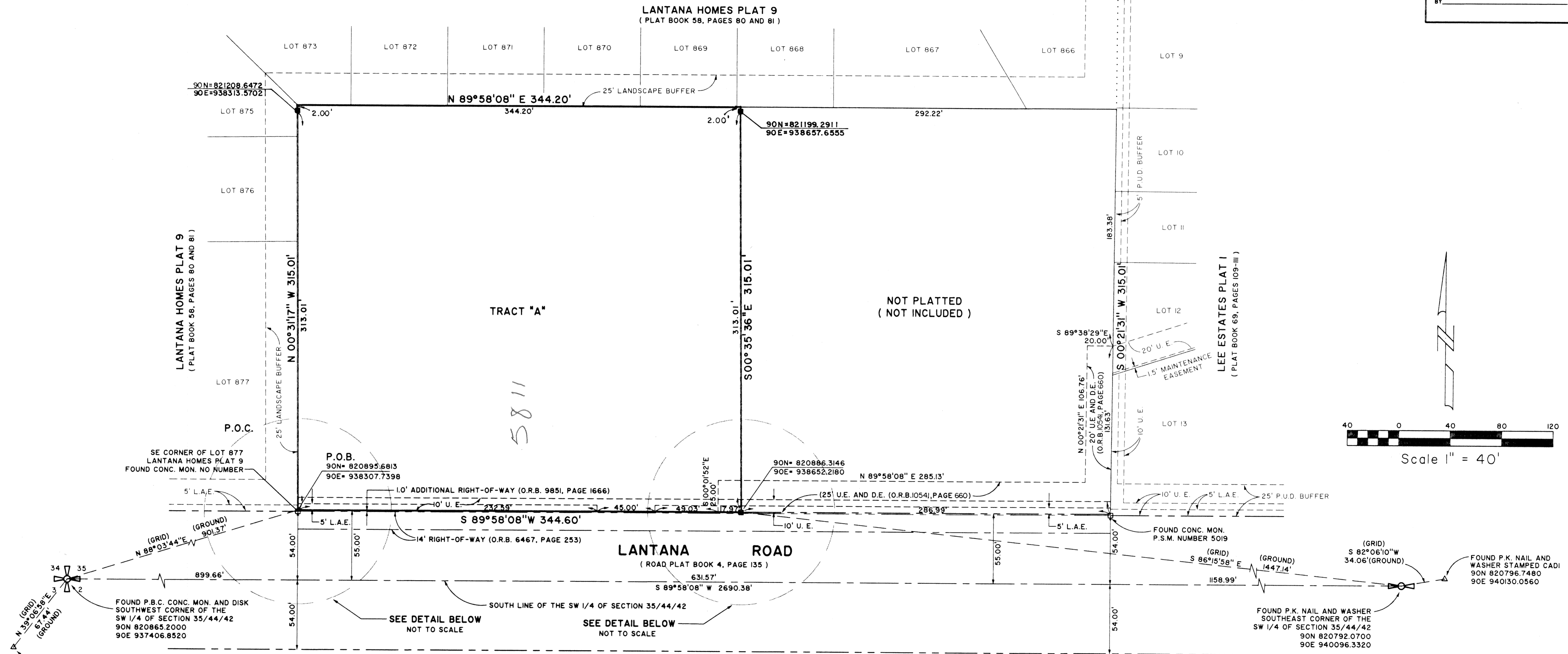
IGLESIA HISPANA BIBLICA BAUTISTA

5376-000

45

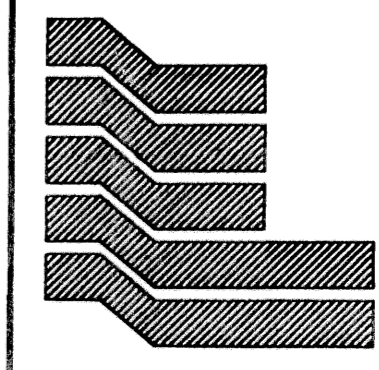
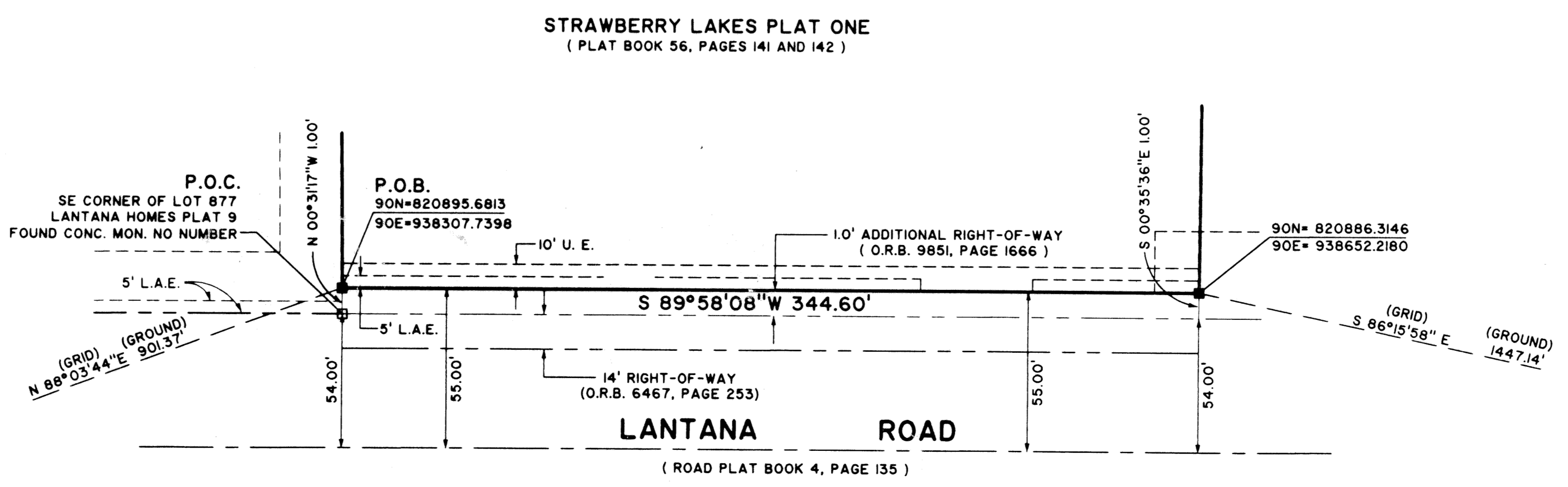
LYING IN SECTIONS 35, TOWNSHIP 44 SOUTH, RANGE 42 EAST,
PALM BEACH COUNTY, FLORIDA.
SHEET 2 OF 2 JUNE, 1998

STATE OF FLORIDA
COUNTY OF PALM BEACH
THIS PLAT WAS FILED FOR RECORD AT _____
M., THIS DAY OF _____ 19____
AND DULY RECORDED IN PLAT BOOK NO. _____
ON PAGE _____
DOROTHY H. WILKEN, CLERK OF THE CIRCUIT COURT
BY _____ D.C.



SUBDIVISION Iglesia Hispana Bautista
BOOK 84
FLOOD ZONE
ZONING RS
CID# 30
SE 96-103
TAZ 070
PID NAME Iglesia Hispana

COORDINATE NOTE:
STATE PLANE COORDINATES SHOWN ARE GRID DATUM, NAD 83 1990
ADJUSTMENT, FLORIDA EAST ZONE, COORDINATE SYSTEM 1983 STATE
PLANE, TRANSVERSE MERCATOR PROJECTION
LINEAR UNIT = US SURVEY FEET
ALL DISTANCES ARE GROUND
SCALE FACTOR = 1.0000326
GROUND DISTANCE X SCALE FACTOR = GRID DISTANCE
S 89°58'08"W (PLAT BEARING) 01°35'19" CLOCKWISE ROTATION
S 88°26'33"E (GRID BEARING) PLAT TO GRID



Landmark Surveying & Mapping Inc.
1850 Forest Hill Boulevard
Ph. (561) 433-5405 Suite 100 W.P.B. Florida

IGLESIA HISPANA BIBLICA BAUTISTA